

Bibi and friends

Training safety measures
BEFORE it is needed

Eric Krier, National Youth Service
BEE SECURE Luxembourg

Safer Internet Center for Luxembourg



Awareness Centre

Helpline

Hotline



BEE SECURE has the mission to promote information safety and a secure use of Internet devices among the general public in Luxembourg. As a national information security competence and excellence centre, BEE SECURE supports the implementation of the country's strategy for information safety and security, based on four pillars:

- *awareness raising and prevention*
- *intervention and response*
- *legislation and standardization*
- *research and development*

Safer Internet Center for Luxembourg

Operating

Awareness:

- Children, youth, carers



Awareness:

- Adult private user
- Campaigns



Steering



LE GOUVERNEMENT
DU GRAND-DUCHÉ DE LUXEMBOURG
Ministère de l'Éducation nationale,
de l'Enfance et de la Jeunesse



LE GOUVERNEMENT
DU GRAND-DUCHÉ DE LUXEMBOURG
Ministère de la Famille et de l'Intégration



LE GOUVERNEMENT
DU GRAND-DUCHÉ DE LUXEMBOURG
Ministère de l'Économie
et du Commerce extérieur

Funding



THE GOVERNMENT
OF THE GRAND DUCHY OF LUXEMBOURG

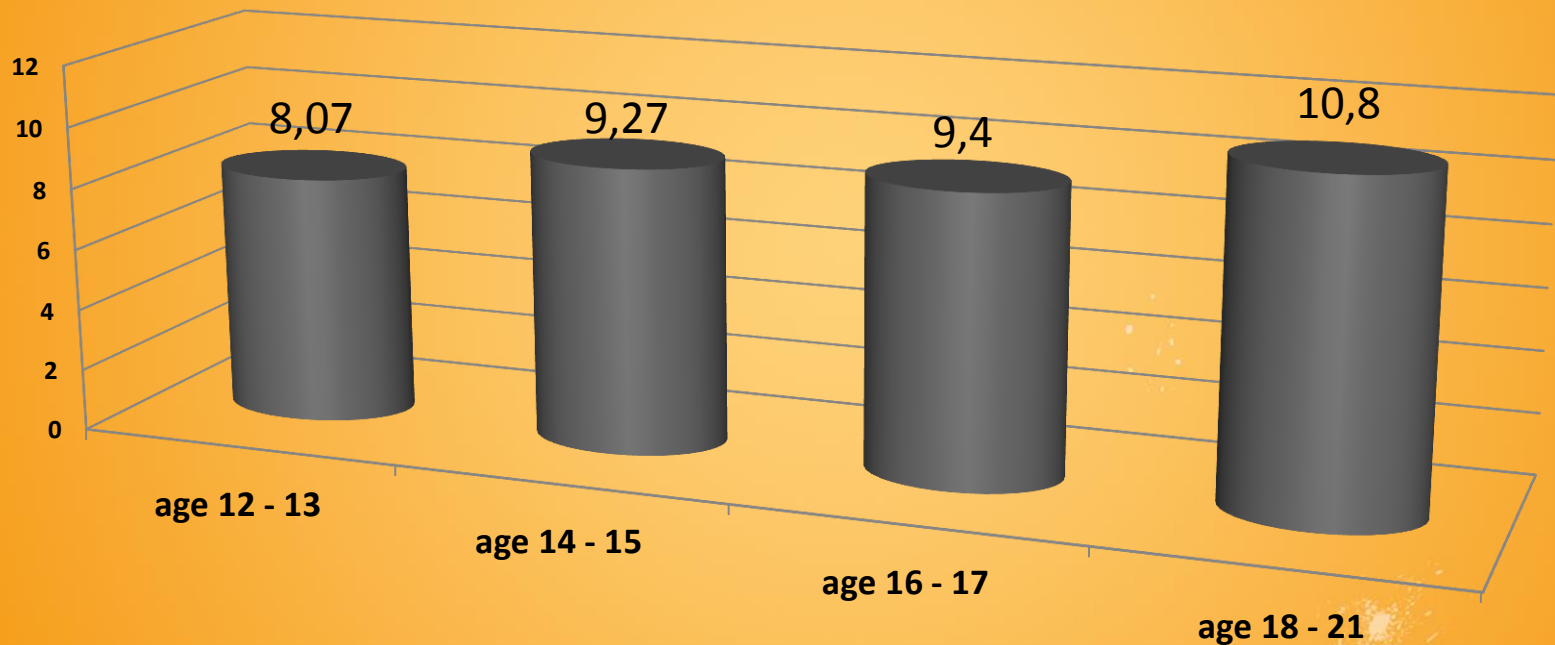


Co-Funded by the European Union

Observations from the field



1. Today's life = digital



Average age at first contact with the Internet

Observations from the field



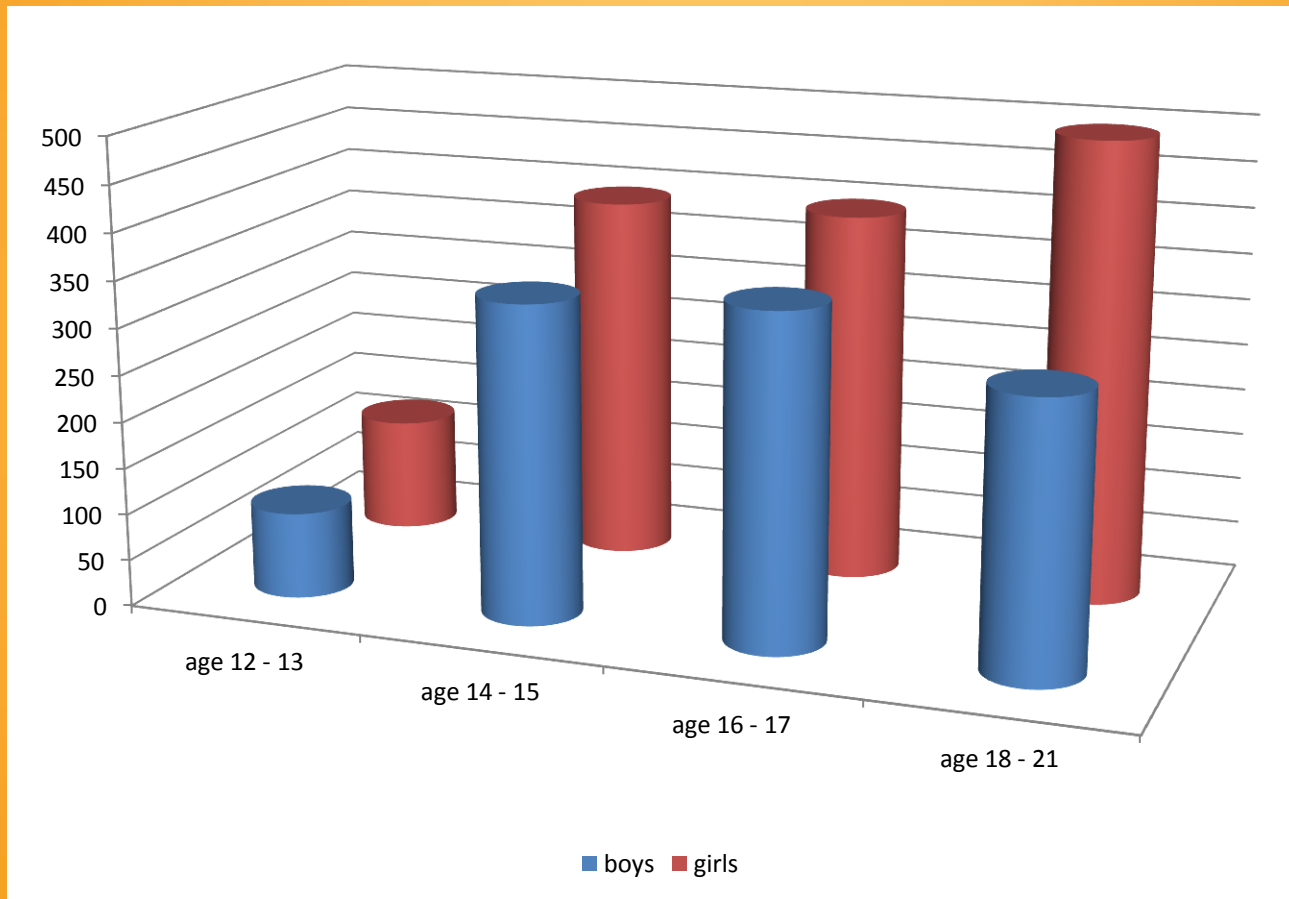
1. Today's life = digital



Observations from the field



2. To be “e” or not to be



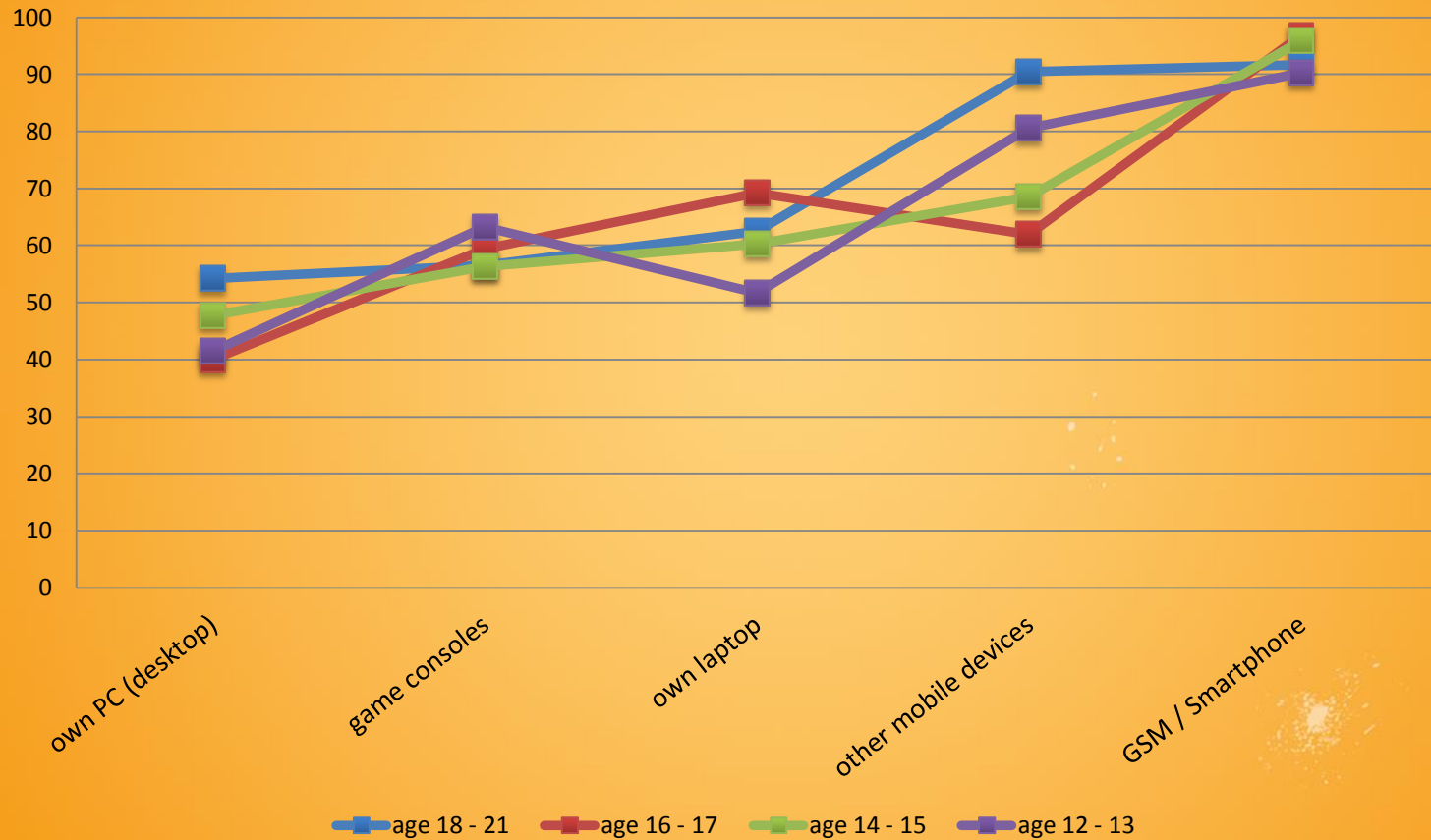
Average number of friends on Facebook

Source: BEE SECURE / uni.lu 2014

Observations from the field



2. To be “e” or not to be



Nutzung verschiedener Gerätetypen um ins Internet zu gelangen.

Source: BEE SECURE / uni.lu 2014

Efforts in prevention



Luxembourg's BEE SECURE approach

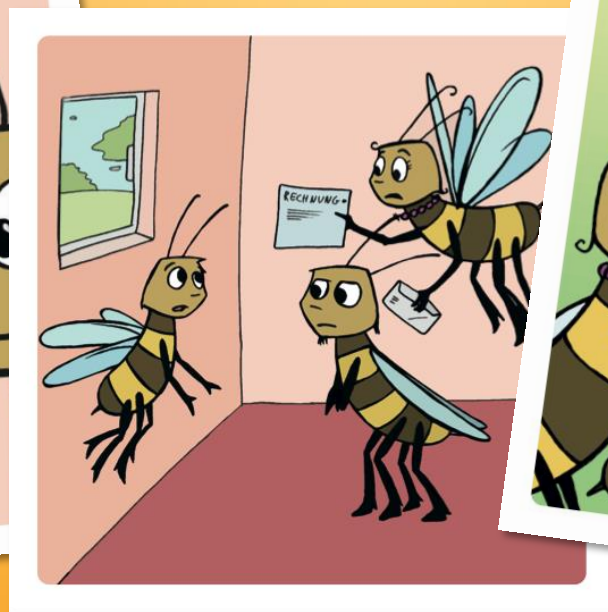
- Creating a culture of safety and security
- Educating people in a positive way
- Establishing a broader view on information safety and security

Efforts in prevention



Luxembourg: “Bibi and friends”

Stories for young kids AND parents



Bibi and friends



Things to take back home



Safer Internet Centers near you

LUX



bee-secure.lu



8002-1234



stopline.bee-secure.lu

DE

Klicksafe.de

Nummer gegen Kummer

116 111

Jugendschutz.net

Internet-beschwerdestelle.de

FR

Internetsanscrainte.fr

Netecoute.fr

0800 200 000

Pointdecontact.net

BE



clicksafe.be

116 000

stopchildporno.be

INTERNATIONAL ASSOCIATION OF INTERNET HOPEES

INHOPE

insafe

Full networks:

insafe.org

|

inhope.org

.

Things to take back home



Don't forget...

... Internet can do great!

losd hen all erou kleng spassten, hen mecht wat hen well dea hud neicht domat ze dinn bande de gamins! fihld da earch gud leit erof ze machen oder wat? gid an d scheul an futteierd eppes an earem liewen an losd hen einfach erou! hun nach nie esou kleng kanner an mengem liewen gesin fodes, ameeeen

villmools merci [redacted], daas ganz leif fun dea, bref, du wees wei d'leit haut des daages sin, kennen neemen een jugeieren sie mengen sie wieren boss domadder. ween baas du ? :(

há cerca de 1 mês

1 pessoa gosta disto



LE GOUVERNEMENT
DU GRAND-DUCHÉ DE LUXEMBOURG
Ministère de l'Éducation nationale,
de l'Enfance et de la Jeunesse



Service National
de la Jeunesse

INTERNATIONAL ASSOCIATION OF INTERNET HISTORY
INHOPE

ins@fe

Eric Krier
eric.krier@snj.lu
www.bee-secure.lu